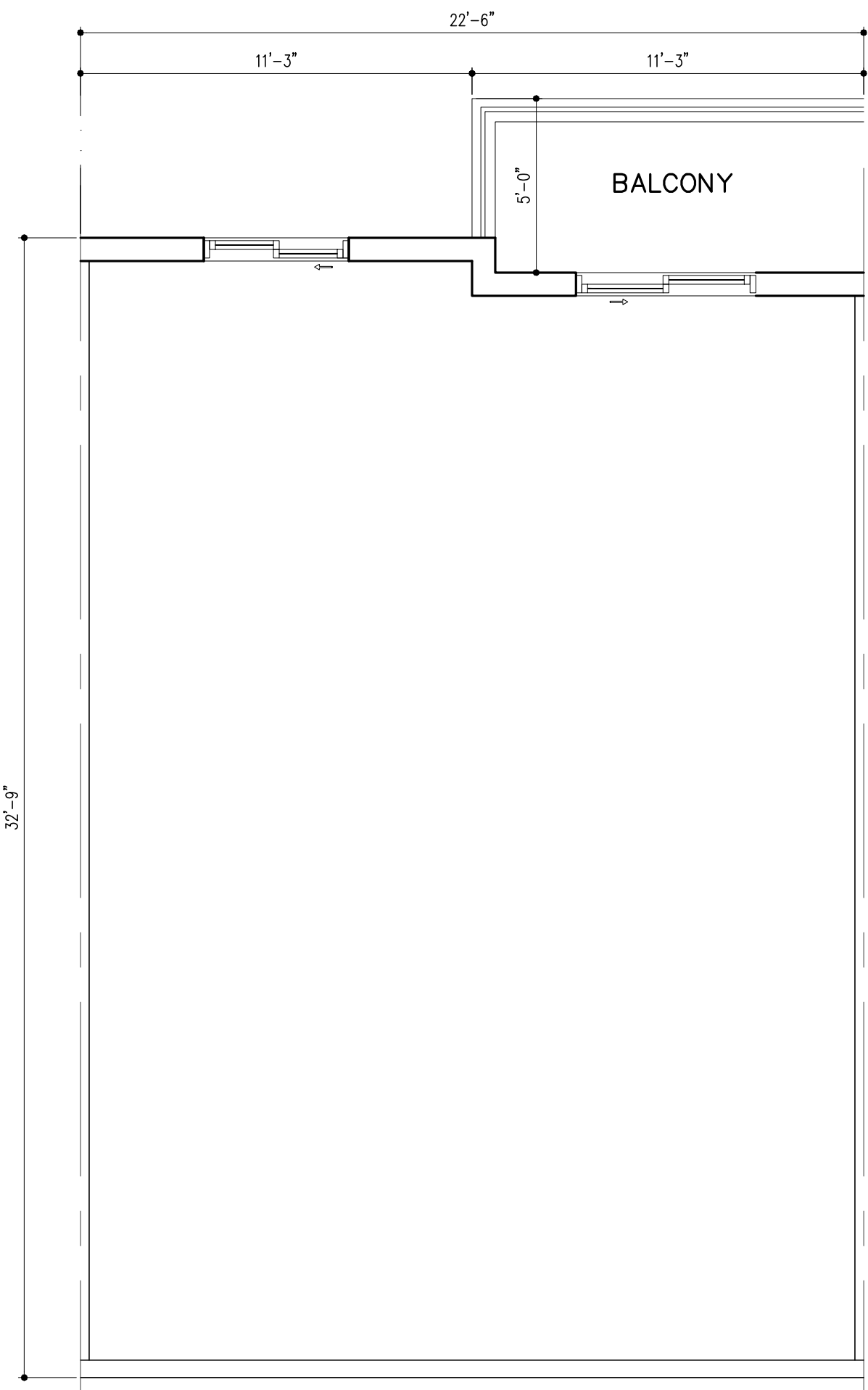
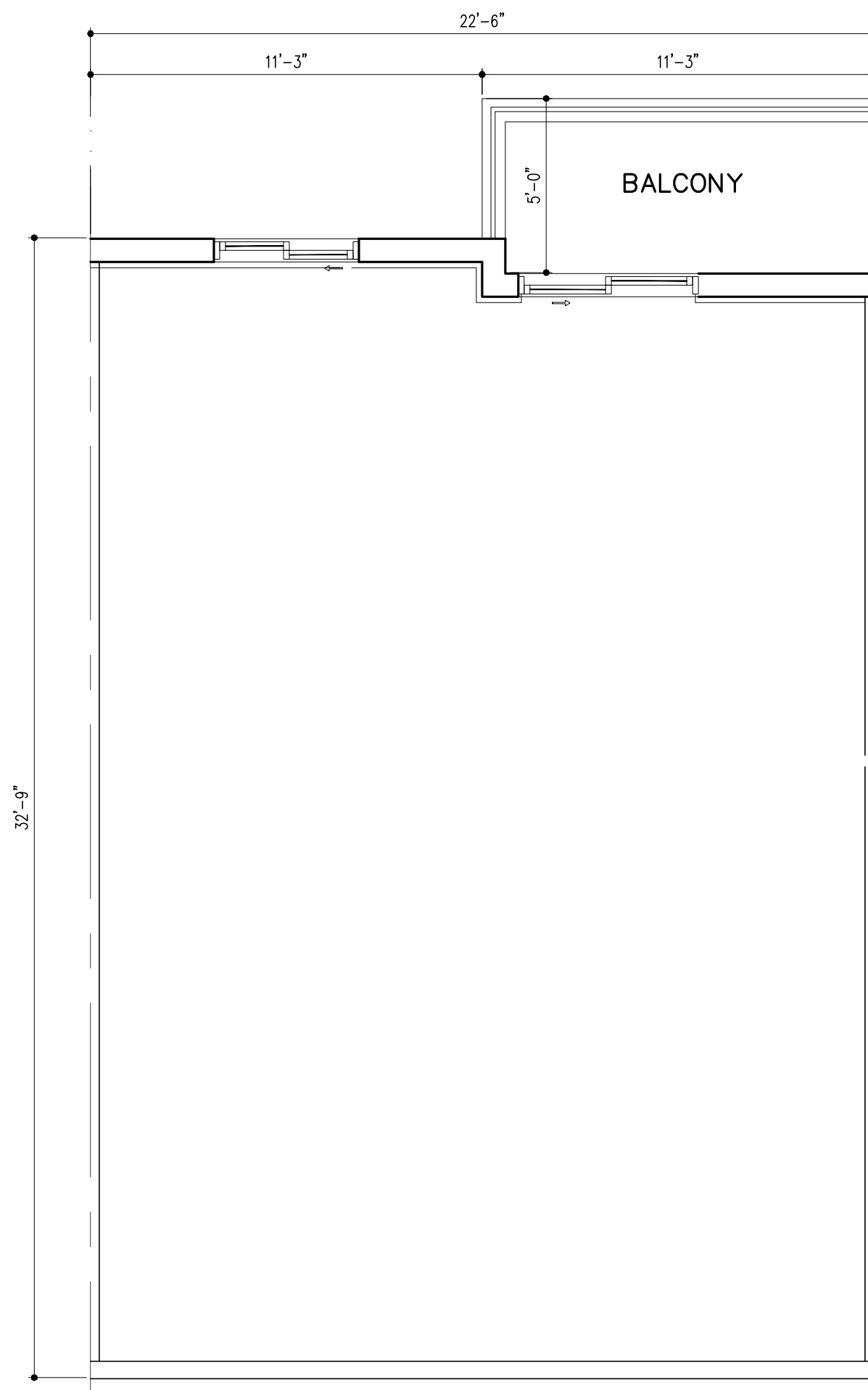


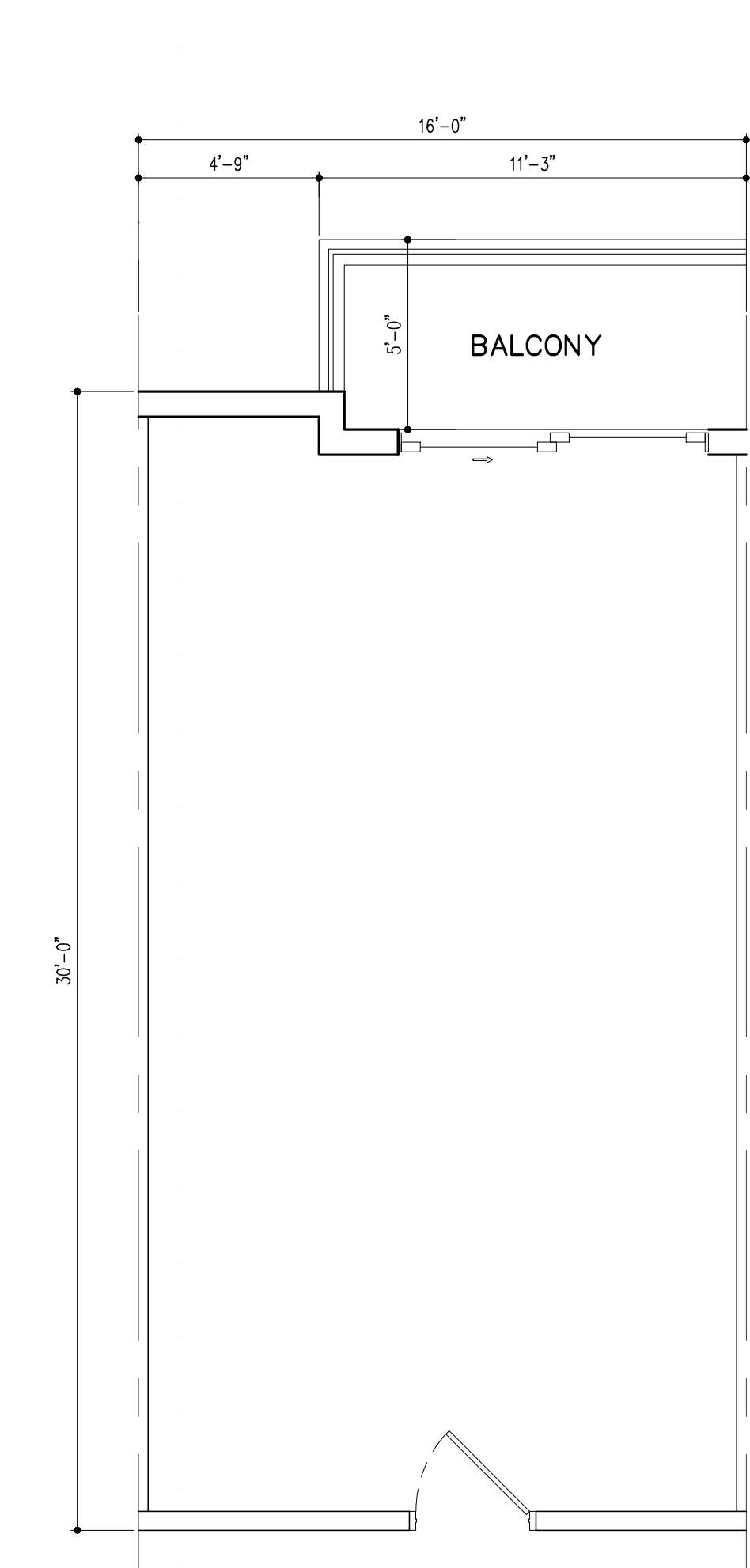
UNIT D1-LEV1 (3BD/2BTH)
A/C AREA = 1,993 SQ. FT. (12 DU'S)



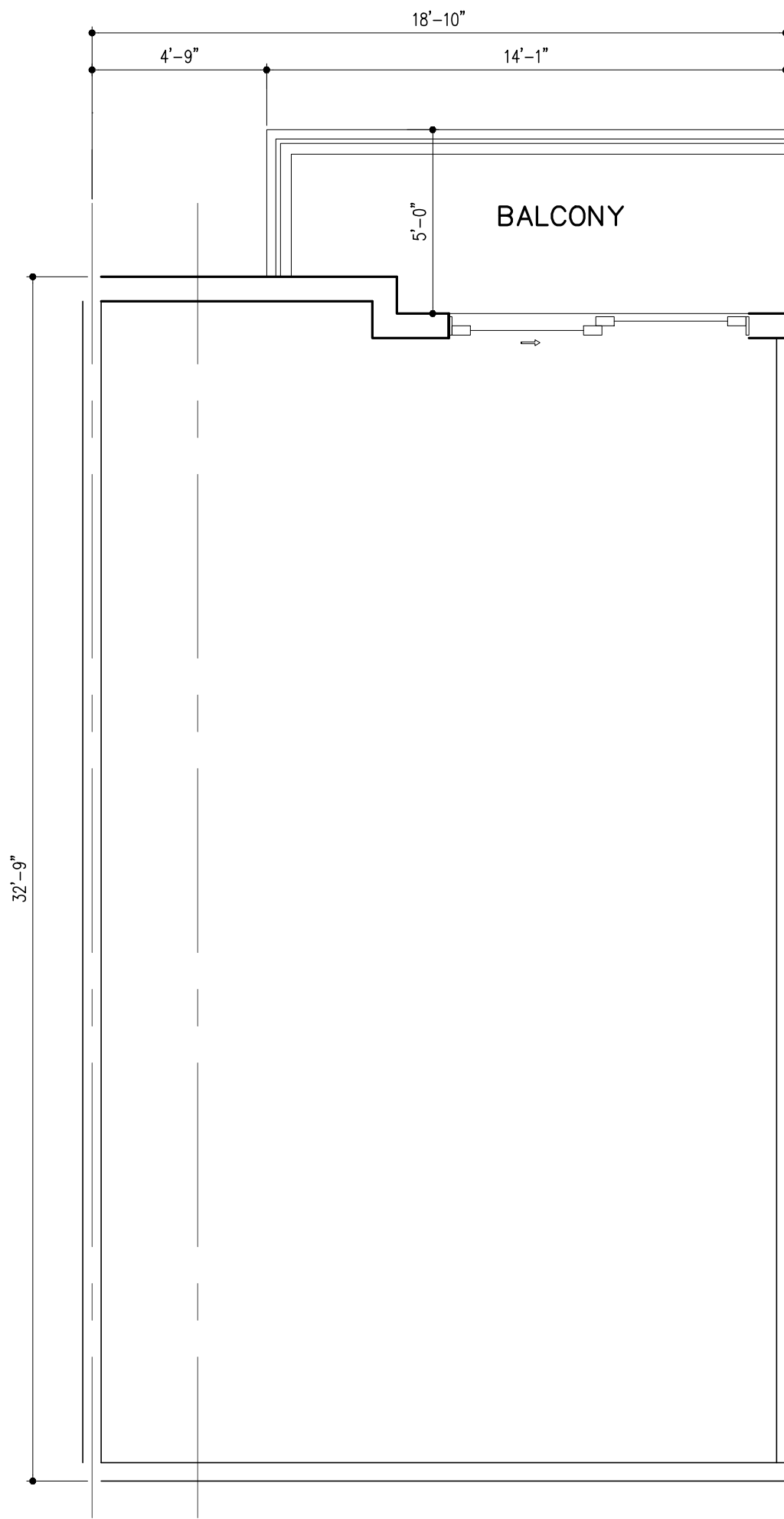
UNIT D1-LEV2 (3BD/2BTH)
(12 DU'S)



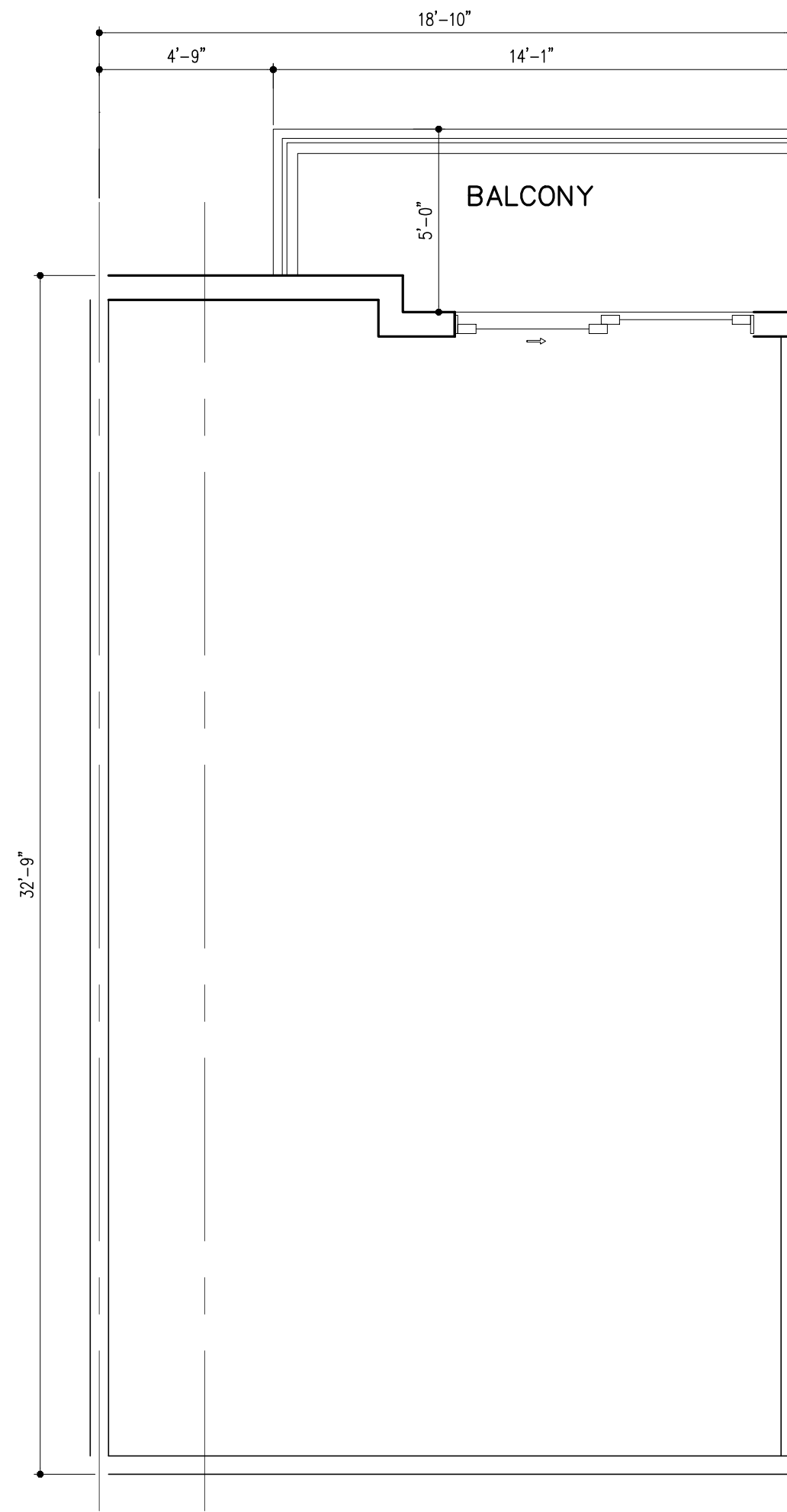
UNIT D1-LEV3 (3BD/2BTH)
(12 DU'S)



UNIT D1M-LEV1 (3BD/2BTH)
A/C AREA = 1,685 SQ. FT. (1 DU'S)



UNIT D1M-LEV2 (3BD/2BTH)
(1 DU'S)



UNIT D1M-LEV3 (3BD/2BTH)
(1 DU'S)

UNIT PLANS

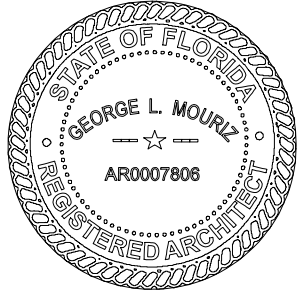
SCALE: 1/4" = 1'-0"

DRC

PZ25-12000001

08/06/2025

REVISIONS:	
DRC SUBMITTAL	02/24/2025
DRC RE-SUBMITTAL	04/16/2025
DRC RE-SUBMITTAL	05/23/2025
AAC SUBMITTAL	07/08/2025
DIGITAL SIGNATURE:	



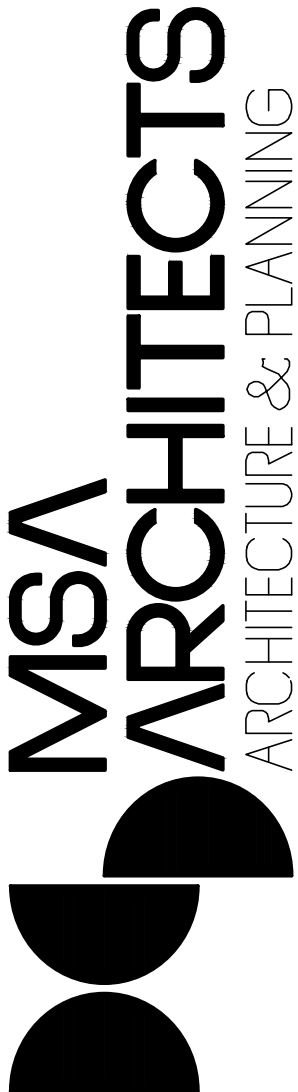
GEORGE L. MOURIZ
AR0007806

POMPANO BEACH APTS
LOCATED AT:
POMPANO BEACH
FOR:
PORTMAN HOLDINGS

ARCHITECT'S BUILDING CODE STATEMENT /
TO THE BEST OF THE ARCHITECT'S
KNOWLEDGE THE PLANS AND SPECIFICATIONS
COMPLY WITH THE FLORIDA BUILDING CODE
EIGHTH EDITION (2023) AND THE
APPLICABLE FIRE SAFETY STANDARDS AS
DETERMINED BY THE LOCAL AUTHORITY
AND CHAPTER 633 FLORIDA STATUTES.
COPYRIGHT © 2024 MSA ARCHITECTS, INC.
THE ARCHITECTURAL DESIGN AND DETAIL
DRAWINGS FOR THIS BUILDING AND/OR
OVERALL PROJECT ARE THE LEGAL
PROPERTY OF AND ALL RIGHTS ARE
RESERVED BY THE ARCHITECT. THEIR USE
FOR REPRODUCTION, CONSTRUCTION, OR
DISTRIBUTION IS PROHIBITED UNLESS
AUTHORIZED IN WRITING BY THE ARCHITECT.



MSA
ARCHITECTS, INC.
8950 SW 74TH CT #1513
MIAMI, FL 33156
P: (305) 273-9911



Project No: 2254.prj
Contract Date:

Scale:

TITLE:

UNIT PLANS

SHEET:

A-4.3